

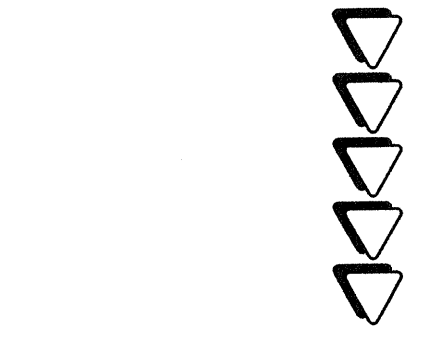
ALOU ARCHITECTURE
 3748 lakeside drive
 suite 101
 reno, nv 89509
 775.324.6811
 fax 770.0110

ASPEN ENGINEERING
 6450 South McCarran Blvd.
 Reno, Nevada 89509
 suite D36
 775-856-6261

registration

revisions

project

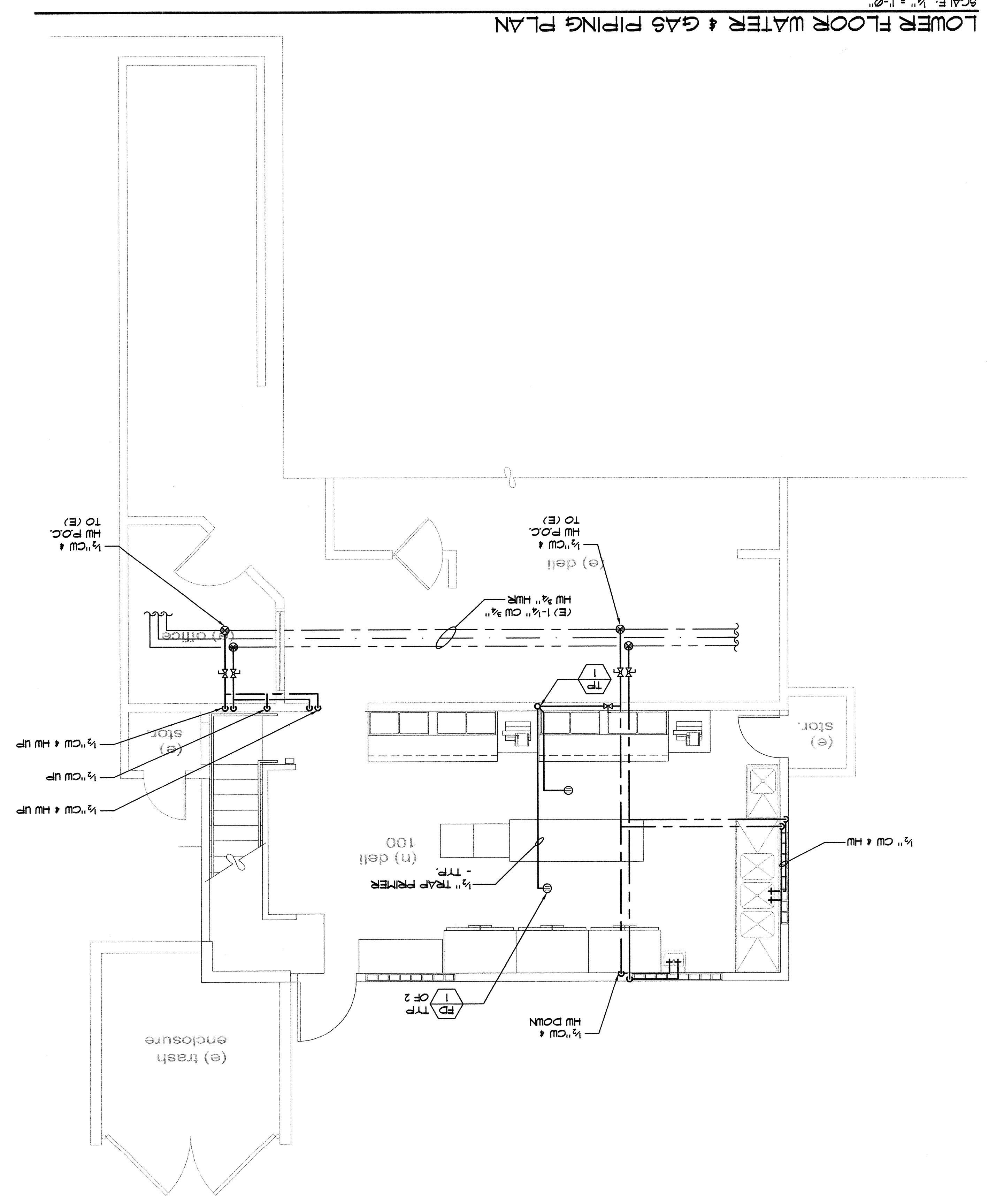


deli towne usa expansion
 3610 lakeside drive
 reno, nevada

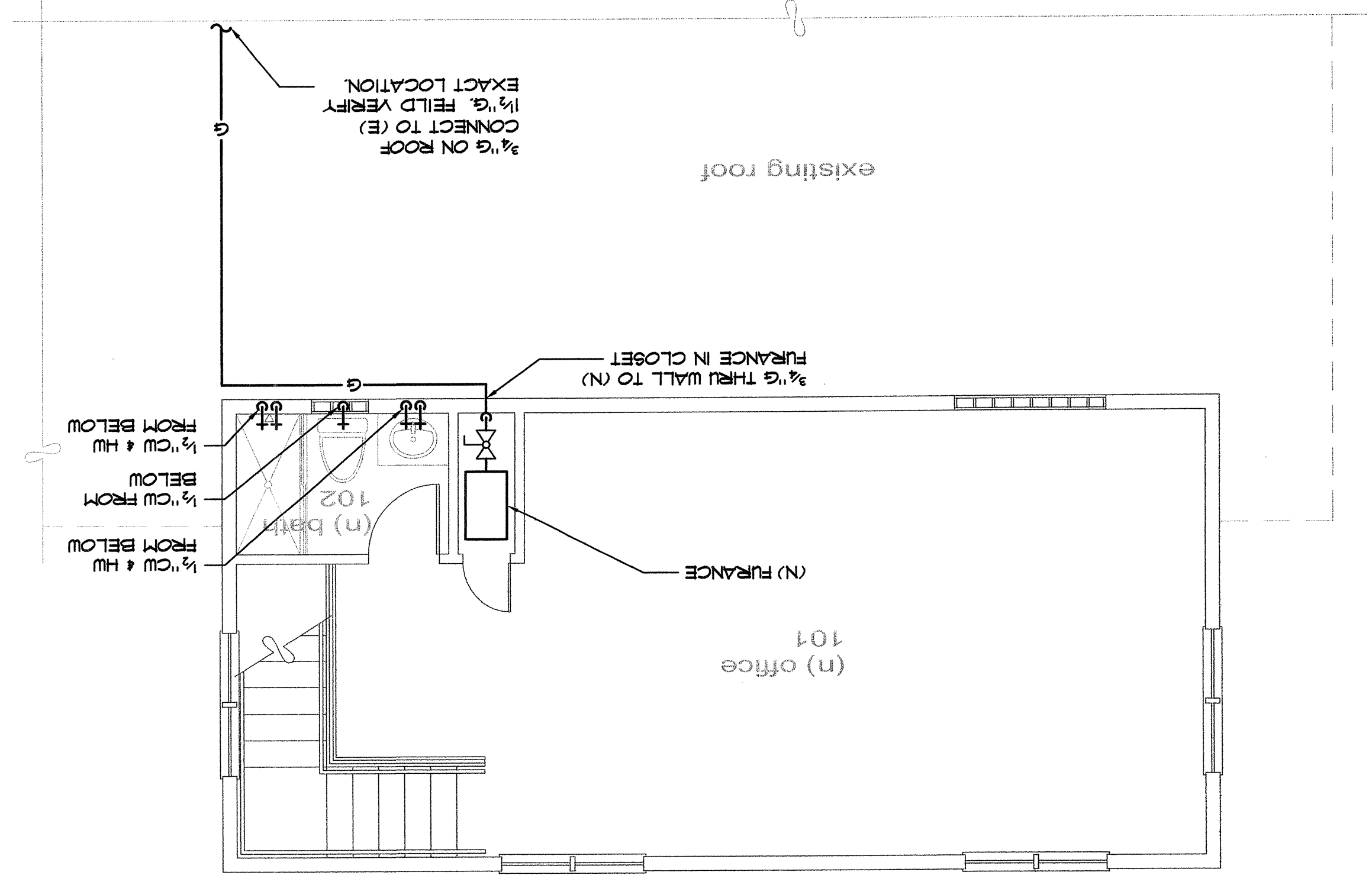
drawn: me
 date: september 15, 2005
 scale: no scale
 project no: 05067
 water distribution plan

P1.2
 drawing
 2 of 3

NOTICE TO BIDDERS
 BIDS ARE TO BE BASED ON EXACT ITEMS (MANUFACTURER AND MODEL NUMBER) SPECIFIED UNLESS SPECIFIC WRITTEN PERMISSION TO SUBSTITUTE OTHER ITEMS HAS BEEN GRANTED BY THE ENGINEER. THE CONTRACTOR ASSUMES ALL RISK THAT ALTERNATE EQUIPMENT MAY BE REJECTED DURING THE SUBMITTAL PROCESS. THE CONTRACTOR MAY BE REQUIRED TO PROVIDE & INSTALL THE EXACT EQUIPMENT SHOWN ON THIS DRAWING. VALUE ENGINEERING ISSUES WILL BE ADDRESSED AFTER THE BID PROCESS IS COMPLETE.



LOWER FLOOR WATER & GAS PIPING PLAN
 SCALE: 1/4" = 1'-0"



UPPER FLOOR WATER & GAS PIPING PLAN
 SCALE: 1/4" = 1'-0"