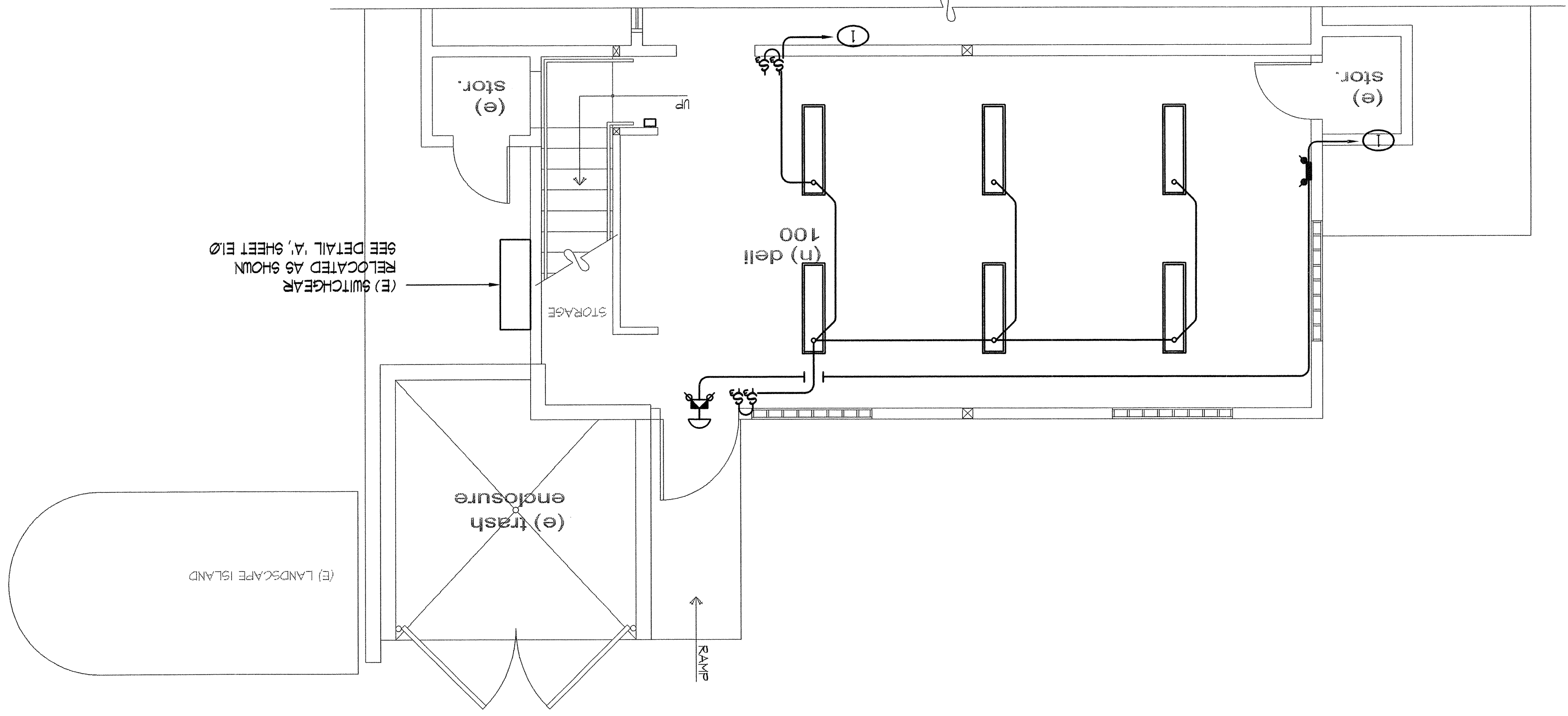


SYMBOL	NUMBER	DESCRIPTION	VLTs / # / AMPs	CONDUIT WIRE	KVA LOAD
①	A	DELI PREP TABLE	120 / 1 / 10	1/2" C, (2) - #12 CU	0.500
②	B	DELI PREP TABLE	120 / 1 / 10	1/2" C, (2) - #12 CU	0.500
③	A	SLICER	120 / 1 / 10	1/2" C, (2) - #12 CU	1.000
④	B	SLICER	120 / 1 / 10	1/2" C, (2) - #12 CU	1.000
⑤	A	TOP MOUNTED REACH IN REFRIGERATOR	120 / 1 / 10	1/2" C, (2) - #12 CU	1500
⑥	B	TOP MOUNTED REACH IN REFRIGERATOR	120 / 1 / 10	1/2" C, (2) - #12 CU	1500
⑦	A	TOP MOUNTED REACH IN REFRIGERATOR	120 / 1 / 10	1/2" C, (2) - #12 CU	1500
⑧	B	TOP MOUNTED REACH IN REFRIGERATOR	120 / 1 / 10	1/2" C, (2) - #12 CU	1500
⑨	C	TOP MOUNTED REACH IN REFRIGERATOR	120 / 1 / 10	1/2" C, (2) - #12 CU	1500

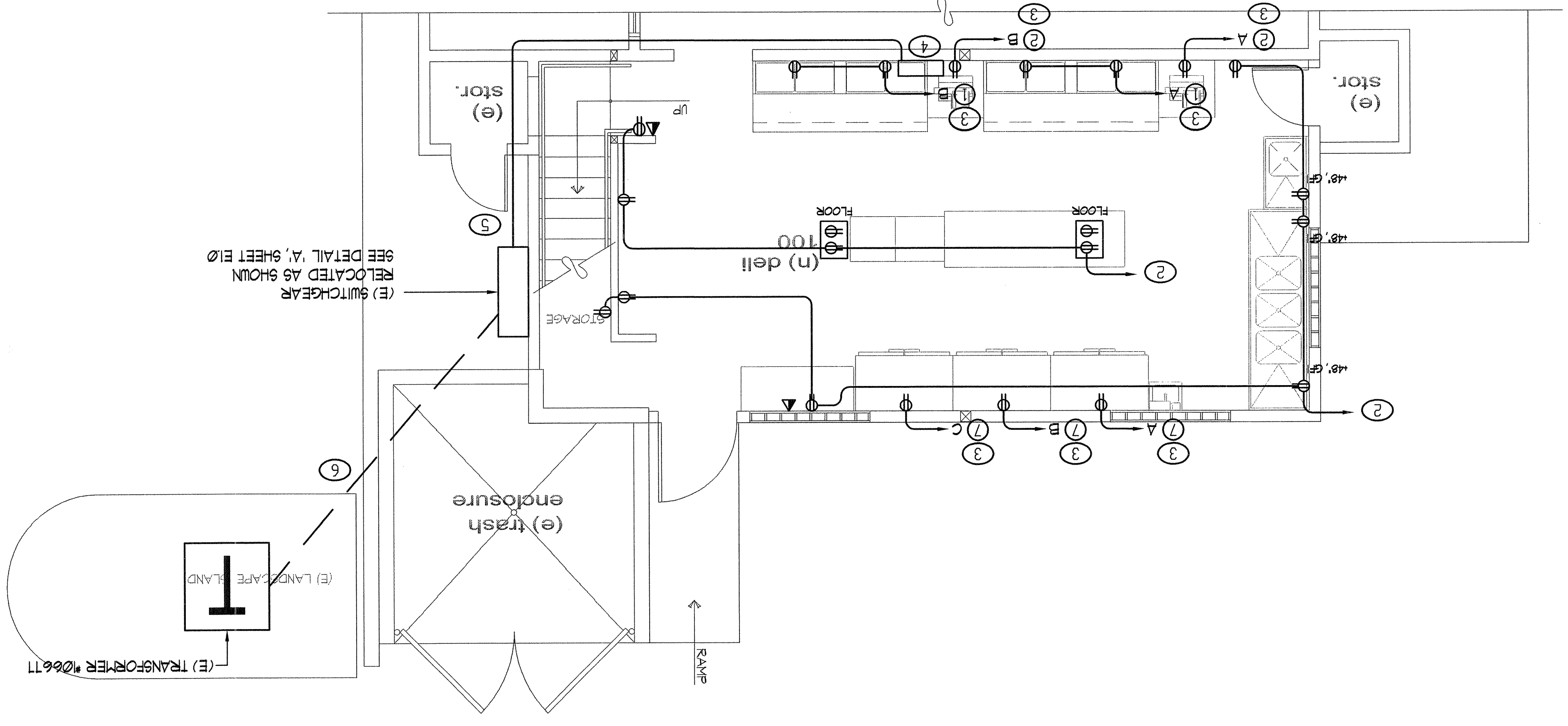
EQUIPMENT SCHEDULE

PROPOSED FLOOR 1 LIGHTING PLAN



- NOTES: (THIS SHEET, ONLY)
- 1) PROVIDE AND INSTALL (1) - 20A, 1-POLE CIRCUIT BREAKER IN EXISTING PANEL FOR NEW LIGHTING.
 - 2) PROVIDE AND INSTALL (1) - 20A, 1-POLE CIRCUIT BREAKER IN EXISTING PANEL FOR NEW RECEPTACLES.
 - 3) PROVIDE AND INSTALL (1) - 20A, 1-POLE CIRCUIT BREAKER IN EXISTING TO INTERCEPT (E) FEEDERS.
 - 4) PROVIDE AND INSTALL NEW 36" x 24" x 8" RAIN TIGHT 8C, J-BOX. PANEL FOR NEW KITCHEN EQUIPMENT.
 - 5) EXTEND PANEL FEEDERS (1, 2, 3) TO RELOCATED MSB AT NEW LOCATION.
 - 6) MODIFY (E) SPFCO SECONDARY TO FEED MSB AT NEW LOCATION.

PROPOSED FLOOR 1 POWER PLAN



Jensen Engineering Inc.
 Electrical Engineers
 5655 Gateway Drive
 Reno, Nevada 89512-3268
 Fax (775) 857-2288
 email: jeng@jenseng.com

9-12-05

E20
B

E20
A

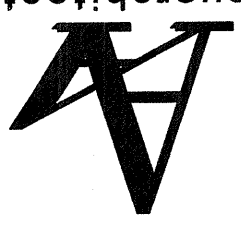
dell towne usa expansion
 3610 lakeside drive
 rano, nevada

drawn:	GAJ
date:	9-12-05
scale:	SHOWN
project no.:	A169SL

SYMBOLS, NOTES, EXISTING CONDITIONS PLAN

project	
revisions	

aloiaarchitecture
 3748 lakeside drive
 suite 101
 reno, nv 89509
 775.324.6811
 fax 770.0110



© 2005 Aloia Architecture