

reflected ceiling plans

project no:	0527
scale:	1/4" = 1'-0"
date:	september 16, 2005
drawn:	mg

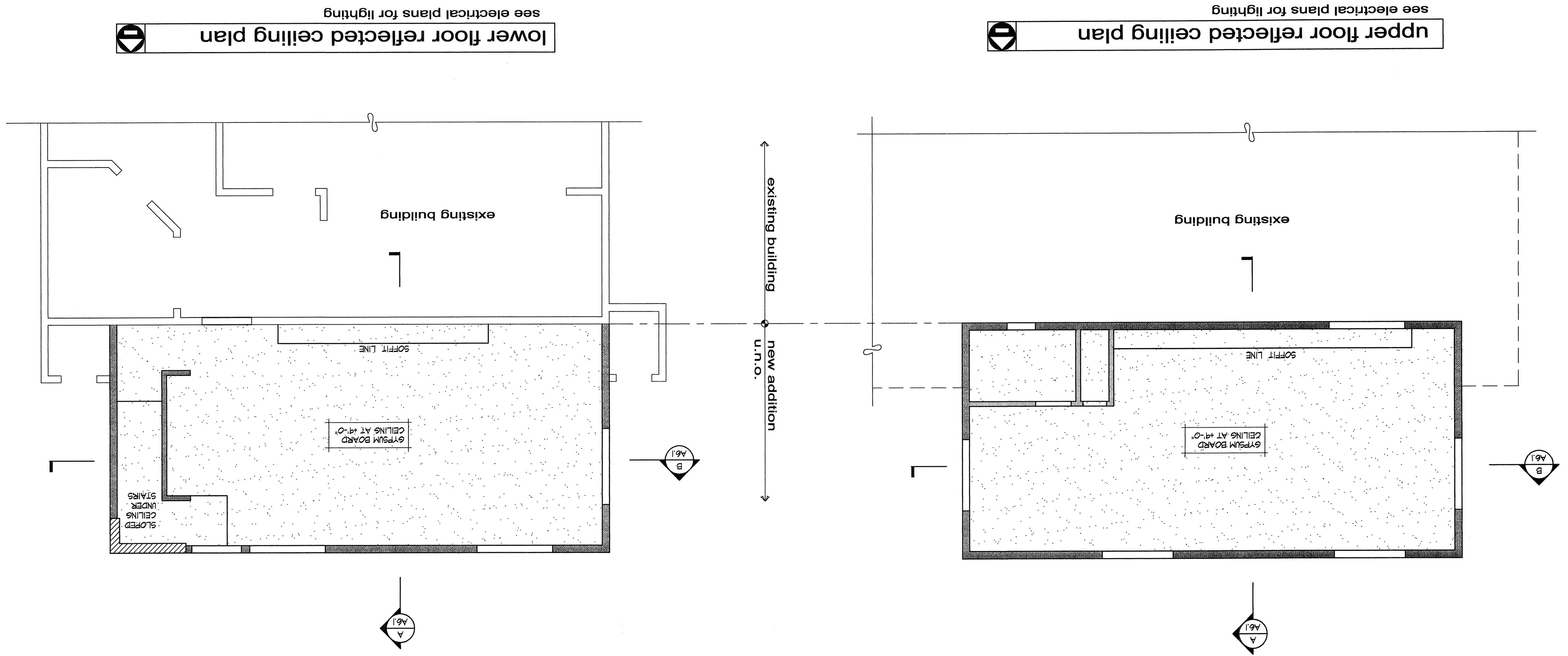
deli towne usa expansion
 3610 lakeside drive
 reno, nevada

project	
revisions	

registration

alotauarchitecture
 3748 lakeside drive
 suite 101
 reno, nv 89509
 775 - 324 - 6811
 fax 770 - 0110

<p>wall legend</p> <p>(E) STRUCTURE TO REMAIN</p> <p>(N) 8" CMU WALL - SEE STRUCTURAL</p> <p>WALL, TYP. UNO.</p> <p>(N) 2 X 4 DF STUDS @ 16" O.C. @ INTERIOR</p> <p>WALL, TYP. UNO.</p> <p>(N) 2 X 6 DF STUDS @ 16" O.C. @ EXTERIOR</p>	<p>ceiling legend</p> <p>5/8" GYPSUM BOARD CEILING - PAINTED</p> <p>NOTE: SEE ELECTRICAL AND MECHANICAL FOR ADDITIONAL INFORMATION.</p>
--	---



upper floor reflected ceiling plan
 see electrical plans for lighting

lower floor reflected ceiling plan
 see electrical plans for lighting